

MT ROUSE News & Views



Community Newsletter

Volunteers honoured in VDC's new rock garden



Story
page 9

Above: The VDC's previous president, Paul Callander, and current president, Jo Vigliaturo, are pictured with the plaque honouring the work of volunteers in building the spectacular rock garden at the VDC.

This colour page sponsored by Neville & Shirley Kruger. Thank you!

New Historic Plaque - A PPA project continues

The PPA have recently completed the installation of a plaque and stand next to the historic water trough at the entry to the Botanic Gardens at the corner of Cox & Martin St.

This continues the PPA's project to install the historic plaques at all building and places of significance across Penshurst over the coming couple of years - funds permitting.

The next project is working with the Council for the replacement of the main BBQ shelter, repairs to several of the pond bridges, and purchase & installation of a full size steel horse with a stockman and kelpie near the historic water trough as part of the commencement of our arts trails through the Botanic Gardens.



Pop over and have a read of the plaque when passing by.

Please do not climb on the trough. It is nearly 100 years old.



Penshurst Monthly Pot-Luck Dinners

At the Senior Citizens Hall at 6pm
for a 6.30pm start on the
3rd Friday of each month.

Next Dinner 17th April

Confirmed dates for the following few months are –

15th May 2026

BYO a main dish to serve 4-6 people, a dessert and your drinks.

Tea, coffee, milk, sugar will be provided.

Come along, bring a neighbour and share a laugh or two.

GOLD COIN donation for the Senior Citizens Club.

Everyone welcome – no bookings required!

Community Meeting with VicGrid

Draft Southwest Renewable Energy Zone (SW REZ)
9th March 2026, Peshurst Botanic Gardens

Despite very short notice, through word of mouth and on Peshurst Victoria Facebook Page, there was a strong community turnout of about 20 people for this meeting. Most people who attended are landholders in the northern part of the SW REZ just south of Peshurst township, living and farming on and around the stony rises of the Mt Rouse Lava flow. This area mostly is a communications black hole; we received no notifications from VicGrid or from Moyne Shire Council about a consultation period; most of us were unaware that we were in a proposed SW REZ. Community consultations occurred in Hawkesdale, Mortlake and other areas in the draft SW REZ but until this last-minute meeting, not in the areas south of Peshurst township.



Photo: Bob McPherson

www.swifft.net.au/cb_pages/sp_brolga.php

Unbeknownst to many at the meeting, VicGrid held a consultation in June 2025 in Peshurst, and community feedback resulted in the draft REZ boundary being scaled back to exclude Peshurst township and the area to the northeast of the township. At the meeting VicGrid confirmed that this area was excluded based on specific feedback on cultural sensitivity grounds, and to protect known brolga flocking sites.

Vic Grid's Community and Engagement Lead for SW REZ and Central Highlands REZ brought information and maps, listened to our concerns and answered questions. They outlined how to make submissions, and many of us went on to write submissions.

The group raised three main areas that the development of renewable energy infrastructure would negatively impact on in our locality, issues specifically arising out of the nature of the Stony Rises Landscape:

1) Fire Risk and Emergency Response Constraints

Turbines will significantly interfere with the ability to use aerial water bombing to fight fire within and adjacent to the Stony Rises, putting firefighters, residents, livestock, and flora and fauna at increased risk.

2) Threat to the Agricultural Industry within the Stony Rises and adjacent landscape

Likewise, aerial delivery of agricultural products such as fertiliser and seed will be significantly impacted, the use of which is built into the viability of farming in and around the stony rises.

3) Outstanding Biodiversity Values

The Mt Rouse lava flow is a landscape of significance and rarity. It is recognised as having landscape values of State-Significance (DPCD South West Victoria Landscape Assessment Study).

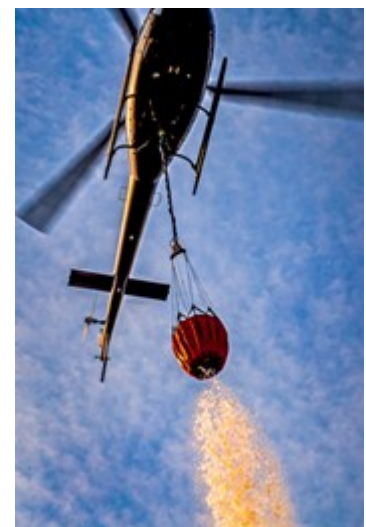


Photo: Brahm Meyer - Unsplash

Community Meeting with VicGrid

Continued from page 3

At 60 km, it is the longest lava flow in Victorian's Western District and is geomorphologically unique. It is a biodiversity hotspot, containing multiple vulnerable populations of fauna and flora, as well as areas of cultural heritage.

VicGrid Timeline

Now that consultation is closed, VicGrid will:

- Review feedback: March 2026.
- Issue a consultation summary report: April 2026.
- Finalise Renewable Energy Zone Orders: Mid-2026.

If you would like to be part of the SW REZ community group receiving community updates about SW REZ issues in our locality, please email: philippa_hedges@hotmail.com.

Your contact details will not be shared or used for any other purposes.

What is a REZ and what is its purpose?

Renewable Energy Zones are strategic planning tools; a geographical area identified by the Victorian government to coordinate the development of renewable energy. The Victorian government's 65 percent renewable energy target is a legislated goal to ensure 65% of the state's electricity generation comes from renewable sources by 2030. This target is part of a broader, accelerated transition to achieve 95% renewable energy by 2035 and net-zero emissions by 2045, replacing coal-fired power.

REZs are not planning zones in the traditional sense such as an agricultural zone, but are being used as a tool to control the rollout of renewable infrastructure over the next 15 years and more. It is an attempt to get renewable energy companies to use existing transmission lines, rather than build without regard to existing assets.

Renewable energy companies will begin / continue negotiations with landholders with the SW REZ who wish to host renewable energy infrastructure, such as wind turbines and solar energy on their land. Landholders cannot be forced to host turbines.

REZs undergo periodic review. They are targeted to cover 7 percent of Victoria.

Compulsory Acquisition of Land for Easements

Significant changes to the law have recently been passed in State Parliament enabling earlier acquisition of easements for all powerlines (transmission lines and distribution lines), before full environmental approvals (EES), expanding the power of government entities like VicGrid, and introducing penalties for landholders who block access.



Photo: Peter Robbins - Unsplash

Caramut & District Garden Club

Our March meeting was held at the home of Kylie Rentsch at Mailors Flat. Marion our President opened the meeting & welcomed all with a lovely phrase, "The only way to do great work, is to love what you do, if you haven't found it yet keep looking & don't settle."

Competition winners.

- | | | | | |
|---------------|------|------------------|------|-----------------------------------|
| Special Rose. | 1st. | Brenda Uebergang | 2nd. | Joan Taggert. & Margaret Humphrys |
| Bloom. | 1st. | Ann Walter's | 2nd. | Joan Taggert |
| Produce. | 1st | Mary Underwood | 2nd. | Marg Humphrys |

Kylie welcomed us to her home & had a wonderful setup for us, thank you very much Kylie Your attention & consideration was very much appreciated. What a wonderful venue the garden was a fantastic achievement & so varied in its presentation, lots of wonderful ideas to take away with us for our own endeavours. It was like walking around a park so interesting & special, thank you Kylie for showing us around your oasis.




The venue for our April meeting is still a work in progress, Eumeralla Roses have been contacted & Gail will be in contact again soon to discuss and hopefully confirm their Rose Garden as next venue. At the moment they are busy preparing for the Melbourne Garden show. New Members are welcome ring Gail 0419 510 364




With the last bit rain the early bulbs are showing through & the lawn is greening up. Time to put out some fertiliser on the garden ready for Autumn planting, seeds to sow Billy Buttons (pictured on right) & California Poppies they make a great show.

Happy & safe Easter to all. Happy Gardening!

Emma KEALY MP NATIONALS MEMBER FOR LOWAN



"If you have an issue you need a hand to resolve, or a great idea on how we can make our region a better place to live, work, study, and do business, I would love to hear from you."

 34 Firebrace St, Horsham
  5571 9800
  emma.kealy@parliament.vic.gov.au



WE REMEMBER THEM.

PENSHURST GENOTAPH

ANZAC DAY

DAWN SERVICE

6AM

COMMUNITY BREAKFAST FOLLOWING

ROAD CLOSURES 5.30AM - 7.30AM

MORE DETAILS IN NEXT FORTNIGHT'S NEWSLETTER



Penshurst Pack Walk & Morning Tea



NATIONAL HEARING DOG DAY

APRIL 19th

10am – Walk the Penshurst
Botanic Gardens with us.

Everyone can join in, bring
your dog or rent one of ours
for a \$5 donation!

email: penshurst.vic@lions.org.au

Providing Hearing Assistance
Dogs free-of-charge since 1982



Lions Assistance Dogs

LIONS ASSISTANCE DOGS



About National Hearing Dog Day

National Hearing Dog Day was established in 2021 to celebrate the life-changing impact of Assistance Dogs on the Deaf and hard-of-hearing community. This special day commemorates the delivery of our very first Hearing Assistance Dog, Amber, on April 19, 1982.

In April 2024, we proudly celebrated a major milestone—the delivery of our 700th Hearing Assistance Dog, Yannis! Now fully accredited, Yannis is making a life-changing impact on his recipient, bringing confidence, independence, and support to their daily life on the sunny Gold Coast.

National Hearing Dog Day continues to highlight the vital role these incredible dogs play in creating a more inclusive and supportive society. National Hearing Dog Day is a chance to recognise the life-changing impact of Hearing Assistance Dogs and the independence they bring to people who are deaf or hard of hearing.

Each Assistance we place with a deaf or hard-of-hearing recipient reflects the dedication of our trainers, volunteers, and supporters who make it possible for us to continue transforming lives through the gift of a highly skilled Hearing Assistance Dog.

Lions Assistance Dogs has proudly operated since **1980**.

We provide highly trained Assistance Dogs, **free of charge**.

Lions Assistance Dogs trains **Hearing Assistance Dogs, Psychiatric Assistance Dogs and Medical Assistance Dogs**.

We have delivered over **750** Assistance Dogs, and that number continues to climb.

We breed Labradoodles and Border Terriers through our **Breeding Program** at our National Training Centre in Verdun, South Australia.

Some of our **Assistance Dogs** come from local trusted breeders or rescue organisations.

As a not-for-profit we rely heavily on support from **volunteers and donors** in our community.

Volunteers honoured in VDC's new rock garden

The Volcanoes Discovery Centre has installed a plaque to honour the work of volunteers in creating its new rock garden.

The rock garden was developed on the northern side of the building last year.

Two volunteers were especially thanked on the plaque - the 2025 VDC president, Paul Callander, and Monash University academic, Dr James Driscoll.

They both provided scientific explanations about the many different types of rocks in the garden, and had major input into the concept and construction of the garden which made the project such a success.

The VDC would like to acknowledge the Southern Grampians for funding this plaque along with a new printer, as part of the 2026 Community Partnerships grant.

By Brian O'Brien VDC, Volunteer



Worried about paying your bills?

We're here to help with practical options like:

- Giving you longer to pay.
- Setting up a flexible payment plan - to spread your payments into smaller, more frequent amounts.

The sooner you get in touch, the sooner we can help - and we'll keep supporting you for as long as you need.

Call us on 1300 926 666
or visit wannonwater.com.au



The Penshurst Men's Shed projects



Sold as a set, with table \$160



2 Seater \$80



Chairs for the verandah \$90 each

Penshurst Shed
 Open Saturday &
 Tuesday
 10am - 4pm
 Enjoying community in
 2026.
Contact Thomas Cooke
 0488 557 345
 Visitors welcome



Above right:
Planters made
to order PO1

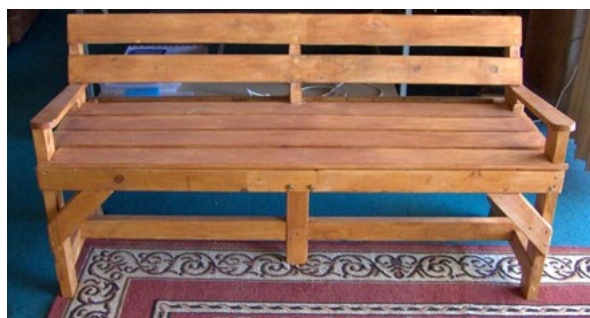


Above: Two seater any size
made to order POA

Right: Table &
Bench Seats
x 2 \$85



Right: Two seater stained \$90





Everyone's an expert/ambassador

Around the time Jeanine and I were looking at doing a Parish exchange (2013) we were deluged with lots of advice on a whole raft of subjects. Which was the best time to fly, which airlines to fly with, who was grumpy at which border, which cities to avoid, which pub serves the best pint and who does the most marvellous English breakfast. Not necessarily the most nutritious but something that meant you'd only have to eat a single banana for the rest of the day. Everyone was an expert of course and spoke with the authority of an experience in 2010 or earlier.

Of course things change, people change, businesses change hands, or go out of business all together. What was purportedly the place to go to have great bangers and mash, now had the windows bordered up and no-one around. Everyone's experience is different and what sort of day the staff were having will determine the vivaciousness of hospitality. It's very easy to come out with a brash and sweeping generalisation like... **All** the people in that quaint little village are... great fun, grumpy... hungover... snobs.

But it works the same way with us too. When people come to our communities to live or holiday or to shop. Every time we interact with someone who is not known to us and we have not met before, we are an ambassador for Hamilton and sometimes for Australia. Of course our visitors will tell their friends and relatives about the time when they met those people in Western Victoria and how ... and then they ... How quick we are to make a quick assessment of a broad populous on a single fleeting encounter. Every day we are an ambassador for our community, our parish and our nation. A great privilege and joy.

Remember...

On Ash Wednesday we have a splendid custom where the ashes from last year's Palm crosses are imprinted on our forehead. You may have seen folk walking around with this grey smudge on their forehead and wondered what all the fuss was about. The words said while the ashes are being placed on the person's head are... "Remember you are dust and to dust you shall return" It's pretty confronting stuff, but it is real and authentic. There's no getting around it. The mortality rate for any given population anywhere on the earth is always 100%. Nothing more... nothing less. Ash Wednesday this year saw me having some surgery. You see, clergy too are mortal. Very mortal. Cut us and we bleed. Snatch away our loved ones in death and we sob. Hearten and embolden us and we grin broadly. If you happen to be part of a worshipping community you may consider how to minister to your minister... if that makes sense.

As I tried to prepare for surgery (how do you do that anyway?) that as my mortal body was being sliced open, right around the world people were praying, being reminded, that they are dust and to dust they shall return.

Ash Wednesday catapulted us into the Forty days of Lent, onto Easter, to infinity and beyond. The good news of Ash Wednesday is that death does not have the last word. Life does. The cross on the forehead should be a visible reminder of that. The seemingly inconsequential guy on the cross actually has great consequences for us and especially when we find ourselves gathered with others in the presence of a shiny coffin.

And it all began with a smudgy cross on our forehead and muttering those humbling but necessary words. Remember you are dust... and to dust you shall return.

MEDIA RELEASE

SOUTHERN GRAMPAINS SHIRE COUNCIL

**Your Council
Your Community****E.COLI ALERT ISSUED FOR WANNON AND NIGRETТА FALLS**

Southern Grampians Shire Council would like to advise community to avoid physical contact with water at both the Wannon and Nigretta Falls after tested samples returned unacceptable coliform and E.coli levels as per the Environment Protection Act 2017 Environment Reference Standards. Given the elevated levels located at the Wannon Falls Scenic Reserve and Nigretta Falls Scenic Reserve, residents and visitors should avoid swimming or having any direct contact with the water to prevent potential health risks.

Recreational land including picnic and BBQ areas remain open.

Warning signage has been installed at both reserves with signage advising visitors that sections of the Wannon River at Wannon Falls and Nigretta Falls is unsafe for swimming due to the current bacterial contamination.

Southern Grampians Shire Council Director Wellbeing Planning and Infrastructure Rory Neeson said the safety advice to residents and visitors is a precautionary measure in response to recent samples collected.

"The recent sampling indicates unacceptable levels of coliform and E.coli which has the potential to pose a health risk to humans who come into contact with contaminated water," said Mr Neeson.

"Swimming is not advised at either location at any time of year as they are not safe or dedicated swimming areas. The advice is to stop swimming at these locations immediately as E.coli has the potential to make you sick. Council will continue to update community on future sampling.

"Council manages the land from which the community accesses the river, however the waterway itself remains under the delegation of the Catchment Management Authority. Council's responsibility is therefore limited to investigating any potential public health risks associated with access from our recreation reserves," concluded Mr Neeson.

Council will continue to monitor these locations as the health and safety of the community is our priority.

For further information, please contact Council's Environmental Health Department on 5573 0444.

Community Invited to Help Shape the Future of Hamilton Library and Civic Square

Residents are invited to share their ideas and help shape the future of the new Community Hub, new Hamilton Library and Civic Square, with the first stage of community engagement from 11 March 2026.

This initial engagement invites community to share ideas about what they would like to see included in the new spaces. Southern Grampians Shire Council Deputy Mayor Cr Helen Henry said the project has the potential to transform Hamilton and the broader region for generations to come.

Continued page 13

MEDIA RELEASE

SOUTHERN GRAMPPIANS SHIRE COUNCIL

**Your Council
Your Community****Community Invited to Help Shape the Future of Hamilton Library and Civic Square**

“At the heart of the proposed Community Hub will be a new Hamilton Library with dedicated digital spaces—a future-ready place to spark ideas, build connections, and foster belonging,” Cr Henry said.

“The library and digital hub will offer flexible spaces for programs, events, and learning, expanding access to education and technology while supporting young people’s future pathways.

“The Hub will also bring together Council offices, allied health services, and essential programs like maternal and child health, alongside adaptable spaces for community activities.

“A shared foyer and customer service area will create a seamless, people-centred experience, making it easy for residents to access multiple services in one location and strengthen collaboration across agencies.

“The Civic Square will form part of the heart of Hamilton providing a central, open gathering place for community events and pop-up activations, offering much needed green space within the CBD.”

This is the first of three planned engagement opportunities with the current phase focusing on capturing community ideas and aspirations.

The second phase planned for April or May this year will invite feedback on concept designs, followed by a third opportunity for residents to review and comment on detailed designs.

“For now, we want to hear directly from our community,” Cr Henry said. “Tell us what would make the new library your ‘go-to’ place each week? What services or programs are currently missing in Hamilton that the new library could provide? What types of spaces do people need most? What events or everyday activities should a Civic Square support? And what would make these public spaces feel welcoming and reflective of Hamilton’s identity?”

Residents can complete the online survey, contribute ideas to the online ideas wall, or provide feedback in person via display boards located at the Hamilton Library with feedback closing end of March.

Hamilton Library is one of Victoria’s leading regional libraries, yet at just 482 square metres it is significantly undersized for the community it serves. Contemporary planning benchmarks indicate Hamilton should have a library nearly twice its current size, and even larger when considering its role as the service centre for the broader Southern Grampians region.

Demand already far exceeds capacity with program participation currently 35 per cent above the Victorian average, with sessions booked out within hours, and around 66,000 people visiting the library each year.

Southern Grampians Shire Council CEO Tony Doyle said the current facility was operating well beyond its intended capacity, highlighting the need for larger spaces.

“Without a dedicated program space, staff are routinely forced to

Continued on page 14

MEDIA RELEASE

SOUTHERN GRAMPIANS SHIRE COUNCIL

**Your Council
Your Community****Community Invited to Help Shape the Future of Hamilton Library and Civic Square**

reconfigure the library floor just to deliver essential activities,” said Mr Doyle.

“The need for a modern, purpose-built Community Hub is further underscored by regional social and economic challenges. Southern Grampians has lower tertiary education rates, limited household internet access, an ageing population and higher-than-average levels of social isolation and family violence.

“Many residents rely on free, accessible public spaces and services to learn, connect and participate in community life. The project also responds to the lack of green, civic gathering spaces in Hamilton’s CBD.

“A new civic square would provide a welcoming, flexible place for events and everyday use, linking key cultural destinations and creating a vibrant, walkable precinct.

“Through this investment, Council aims to strengthen community wellbeing, support lifelong learning and ensure the region has the facilities it needs for a thriving future,” concluded Mr Doyle.

The Community Hub concept and detailed design package were included as part of funding secured through the Regional Precincts and Partnerships Program, with \$5 million granted in October 2024.

Council has committed \$17 million to the project and is seeking a further \$17 million in government support to deliver the full \$34 million development for the Southern Grampians community.

Residents can find more project information as well as the survey and online ideas wall at New Library, Community Hub and Civic Square | Engage Southern Grampians

**COUNCIL CALLS FOR MODERNISED WATER AND SEWERAGE PROGRAM
TO SUPPORT RURAL TOWNS**

Southern Grampians Shire Council is calling for renewed State and Federal investment in water and wastewater infrastructure for small rural towns, following a recommendation endorsed at the 10 March Council meeting.

Council will formally submit a motion to the Municipal Association of Victoria (MAV) seeking support for the establishment of a modernised Country Towns Water Supply and Sewerage Program (CTWSSP).

The motion will be considered at the MAV State Council meeting on 29 May 2026, where councils from across Victoria will gather to determine key advocacy priorities for the sector.

Southern Grampians Shire Council Deputy Mayor Cr Helen Henry said the proposal responds to growing infrastructure challenges facing rural towns across Victoria.

“Many towns in our Shire and across rural Victoria rely on ageing or inadequate water and wastewater systems,” said Cr Henry. “In some communities these systems

Continued page 15

MEDIA RELEASE

SOUTHERN GRAMPPIANS SHIRE COUNCIL

**Your Council
Your Community****MODERNISED WATER AND SEWERAGE PROGRAM TO SUPPORT RURAL TOWNS**

are no longer able to meet modern health or environmental standards, which creates serious challenges for councils and residents alike.

“Without necessary upgrades it becomes extremely difficult for towns to support new housing, allow subdivisions, or encourage economic development. At the same time, ageing systems increase risks to public health and the environment.”

Recent investigations, including the Peshurst Adaptive Wastewater Pilot Project, found that approximately 93 per cent of onsite wastewater systems in Peshurst were non-compliant, highlighting the urgent need for town-scale wastewater solutions.

The motion highlights that the former Country Towns Water Supply and Sewerage Program once helped regional communities deliver critical infrastructure projects. However, no equivalent program exists today, leaving councils and water authorities facing multi-million-dollar infrastructure costs that are well beyond the financial capacity of small rural communities.

“Investing in water and wastewater infrastructure is essential to protect public health, support housing growth and ensure our rural towns remain liveable and sustainable,” concluded Cr Henry.

The Municipal Association of Victoria is the legislated peak body representing all 79 councils across the state. Its State Council meets at least twice each year, providing councils with the opportunity to raise issues affecting their communities and seek collective advocacy at the state and national level.

If supported, the motion will ask the Victorian and Australian Governments to establish a long-term, co-funded program to help deliver essential water and sewerage infrastructure in small regional communities.

For more information about Southern Grampians Shire Council’s advocacy work, visit the Council website.

**COUNCIL INVITES COMMUNITY COLLABORATION TO IDENTIFY
MOBILE BLACK SPOTS**

Many parts of the Southern Grampians Shire struggle with patchy, unreliable or non-existent mobile phone coverage. To begin addressing this issue, Southern Grampians Shire Council is calling on residents to assist with mapping mobile phone black spots across the region.

More noticeable now since the nationwide deactivation of 3G networks, residents and businesses have reported gaps in service across farmland, townships, roads and recreation areas. This has understandably raised concerns around safety, communication and day-to-day connectivity in the Shire.

Council is undertaking a Shire-wide investigation to identify where mobile coverage has been lost, weakened, or was never present to begin with. Council will combine industry research with local knowledge gathered through a community mapping project.


MEDIA RELEASE

SOUTHERN GRAMPAINS SHIRE COUNCIL



Your Council
Your Community

COUNCIL INVITES COMMUNITY COLLABORATION TO IDENTIFY MOBILE BLACK SPOTS

Council is seeking your support because the stories from our community and our own experiences often do not line up with what we are being told by our network service providers. Information gathered will go a long way towards supporting advocacy to government as well as service providers and will play a vital role in supporting applications for funding to correct these issues.

Southern Grampians Shire Council Acting Mayor Cr Helen Henry said community input will play a vital role in building an accurate picture of mobile connectivity across the Shire.

“This is a big shire, with over 2,800 kilometres of roads along with vast expanses of farmland, camping areas, waterways and bushland,” said Cr Henry. “It is a massive area for us to map and that’s why we’re asking our community to share their problem areas.

“Much of the land covered by black spots comprises of private land or remote places that our teams either cannot access or simply aren’t aware of. We’re hoping that local knowledge can help us to connect the whole region, so no one is left in the dark.”

Reliable mobile coverage is essential for emergency response, farm operations, tourism and local businesses, particularly in regional areas where connectivity can directly impact safety and economic activity.

Council is encouraging residents to keep the project in mind during their daily routines. Whether you’re out in a paddock, travelling down a back road, camping in nature or just in the wrong part of your street, we want to know exactly where there are gaps.

If you lose mobile service, please note your location and, once back in an area with reception, visit Council’s Engage With Us webpage to drop a pin on the interactive map and complete a short survey.

The information collected will be compiled into a detailed report providing an evidence-based snapshot of mobile coverage across Southern Grampians. The findings will support Council’s continued advocacy with telecommunications providers and government agencies to push for improved infrastructure and better outcomes.

The survey is now open and will run until Thursday 30 April 2026, with results to be analysed following the project’s completion.

To contribute to the project or learn more, head to the Engage with Us section of our website.

For updates on Council projects and community initiatives, visit Council’s website or sign up to the monthly eNews.

Crossword answers last fortnight: **Across:** 3 consensus, 8 fancy, 11 install, 13 strength, 14 ready, 15 architecture, 16 judge, 17 deprivation, 18 structure, 21 earthwax, 22 voyage, 24 upset. **Down:** 1 speech, 2 disappointment, 4 illusion, 5 difference, 6 habit, 7 tolerant, 9 uncertainty, 10 smile, 12 place, 17 direction, 19 cutting, 20 reverse, 23 gear.

A tiny touch of insanity

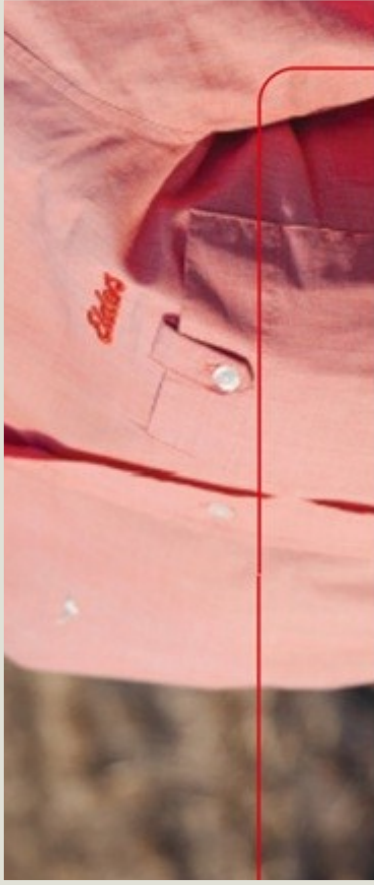
They say Australians complain about the weather at least three times a day. Personally, I consider that an underestimation bordering on slander. I complain about the weather the way other people hydrate: constantly, instinctively, and with a faint sense of moral duty. It's one of my most finely honed talents, practically a calling. Too hot. Too cold. Too windy. Not windy enough. The drizzle is rude. The cloud cover is smug. The frost feels judgmental. Some people complain recreationally. I complain as if the climate owes me money. Until last Tuesday, I assumed this was harmless. A personality quirk. A coping mechanism. An Australian pastime with strong instincts for survival and sarcasm. I only realised the weather had developed a personal vendetta against me the morning my umbrella tried to bite me.

The Umbrella Revolt

To be clear, it wasn't a mouth or anything. My umbrella, a device whose sole purpose is loyalty in adversity, snapped shut on my fingers like it had been hired to assassinate me. I yelped and dropped it. A gust of wind immediately rolled it away down the pavement, with the vindictive enthusiasm of something that had finally handed in its notice. I glared upward. "Oh, so THAT'S your mood today," I said. A sunbeam appeared briefly to spotlight the discarded umbrella like a fallen soldier in a crime drama. The sky, in my professional opinion, was smirking.

Author's name provided.

More next fortnight.



ELDERS HAMILTON

Proud to be a supporter of local communities

BRANCH MANAGER & RURAL

REAL ESTATE

Lachy Patterson 0407 704 684

WOOL

Andrew Howells 0418 846 291

Kate Methven 0488 415 883

David Whyte 0407 347 203

State Wool Manager

Lachie Brown 0409 645 915

LIVESTOCK

Aaron Malseed 0407 782 286

Jordy Anthony 0407 649 925

Dillon Dawson 0438 054 593

STUD STOCK

Ross Milne 0408 057 558

MERINO STUD STOCK & WOOL

Kevin Beaton 0455 119 711

FARM SUPPLIES

Ryan Gerring 0439 699 110

Damon Hiscock 0439 671 046

Rob Browne 0427 315 793

Rod Evans 0498 750 125

James Whyte 0458 322 094

AGRONOMY

Mark Rouse 0473 444 288

Gabby Redpath 0438 903 123

Damien Goodman 0438 028 985

SALES SUPPORT

Ann Hiscock 5551 5700

Wendy Kerr 5551 5700

Annaleace Dohle 5551 5700

Maggie Craig 0427 976 179

100 Portland Road,

Hamilton P. 03 5551 5700

E. hamilton@elders.com.au

elders.com.au



A PAGE TO SHARE RECIPES

5-ingredient cheesy Mexican stuffed chicken breasts

Prep Time 15 mins Cook 30 mins Serves 4

INGREDIENTSwww.taste.com.au

280g jar mixed chargrilled peppers
4 chicken breast fillets
1/2 cup firmly packed coriander leaves
300g jar Mexico Salsa Roja

2 tbsp water
4 slices British Chilli Cheddar Slices, halved
Coriander sprigs, to serve

Method**Step 1**

Preheat oven to 190C/170C fan-forced.
Drain peppers, reserving 1 tbsp marinating oil. Slice peppers.

Step 2

Cut slits into each chicken breast, about 1 1/2cm apart, being careful not to cut the whole way through. Push peppers and coriander leaves into the cuts.

Step 3

Reserve 1/4 cup salsa. Stir water into remaining salsa and spoon over the base of a greased 21cm x 35cm roasting pan. Arrange chicken breasts on top. Drizzle with reserved oil and season.

Step 4

Bake chicken for 15 minutes. Drizzle chicken with reserved salsa and top with cheese slices (breaking where needed to completely cover top of breasts). Bake for 15 minutes or until cheese is melted and chicken is cooked through. Serve sprinkled with coriander sprigs.



The **Dhyan Foundation from Melville Forest** is delighted to offer Yoga classes in Peshurst at the Peshurst Primary School, Ritchie St. in the Sports Pavilion, @ 5pm each Wednesday evening. 11 people attended the first class last week and it was an excellent experience. Classes by donation.

5576 5270

Friendly faces and helpful staff ...

Penshurst Liquor & Grocery Store

Open 7 days

Opening Hours:

Monday - Friday

7am - 7pm

Saturday

8am - 6pm

Sunday

8am - 5pm

80 Bell Street, Penshurst



Sandwiches & lunch packs available

Order your meat, fresh fruit & vegetables
by phone for collection at your convenience

Groceries - Bread - Frozen Foods

Beer - Wine - Spirits

Penshurst's News Agency



Penshurst Store



Amanda & Cam Wilson
0439 941 942

**Pop into the store and try some of our
delicious pies, pasties and sausage rolls.
Freshly baked bread, cakes and slices.**

**Treat yourself to an Amanti coffee or
Hot Chocolate and browse our
everchanging giftware and
local produce.**

**Phone orders and payments
are welcome.**

Monday - CLOSED

Tuesday to Friday - 7.30am - 2.00pm

Saturday - 8.00am - 2.00pm

Sunday - CLOSED

Café/Bakery

110 Bell Street, Penshurst

penshurststore@gmail.com

With over 30 years experience, Pierre from Hamilton Tiling is now offering his services. Whether it's a small or large project call 0421739282 for a quote.



m: 0421 739 282
Hamilton Tiling Vic
@hamiltontilingvic
www.hamiltontiling.com.au
e: pierre@hamiltontiling.com.au

It's time we recognize that going into the trades is just as impressive, and in fact can be just as lucrative, as a 4-year degree.

Phil Scott

CHRISTOPHER COOK CONSTRUCTIONS

Ph: 0417 100 243

Fax: 5576 5267



**HIA Reg CB-U 6214
DB-U 5109**

**112 Bell Street
Penshurst Vic 3289**

Penshurst Post Office

31 Martin Street

Post Services

Gifts & Cards

Stationery & Office Supplies

Collectables & Books

Craft Supplies

Tech Accessories

Bank @ Post



Post Office Boxes Available



Serving the greater Hamilton area
Preventative, repairs & renewals
Heat pump rebate specialist

Hot water upgrades

General plumbing

Gas servicing

Call Dan:

0409 852 887

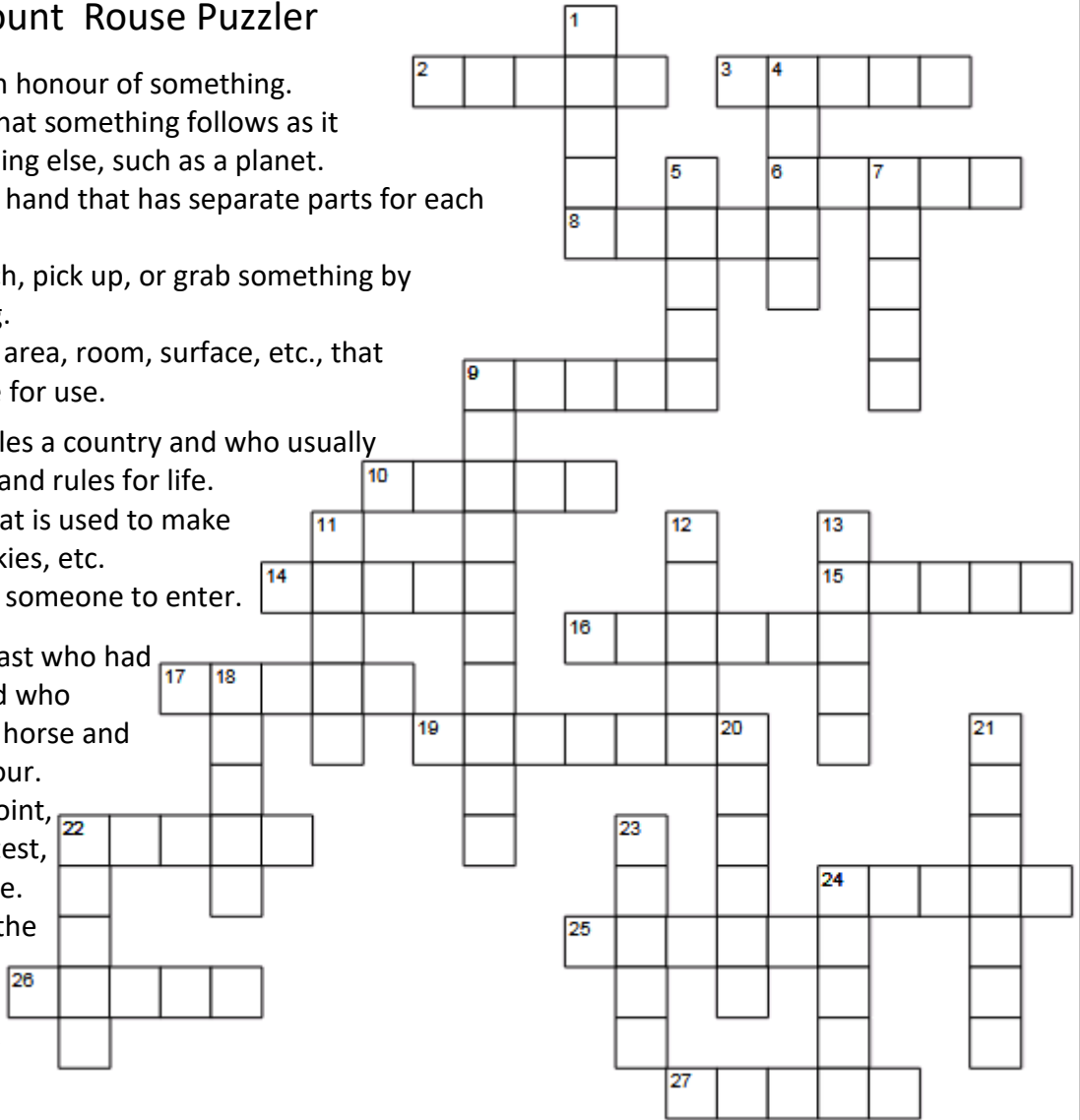
www.thehappyplumber.com.au

REC. NO. D15302

LIC. NO. 101019

Across: Mount Rouse Puzzler

- 2: A piece of metal in honour of something.
- 3: The curved path that something follows as it goes around something else, such as a planet.
- 6: A covering for the hand that has separate parts for each finger.
- 8: To be able to touch, pick up, or grab something by moving or stretching.
- 9: The amount of an area, room, surface, etc., that is empty or available for use.
- 10: A woman who rules a country and who usually inherits her position and rules for life.
- 14: A kind of grain that is used to make flour for breads, cookies, etc.
- 15: Confess to; allow someone to enter.
- 16: A soldier in the past who had a high social rank and who fought while riding a horse and usually wearing armour.
- 17: To win or get a point, goal, etc. in a sport, test, competition, or game.
- 19: A raised area on the skin that contains clear liquid and that is caused by injury to the skin.



- 22: A person employed in an office or bank to keep records, and other administrative duties.
- 24: The name given to something to identify or describe it.
- 25: To spread by hearsay.
- 26: A feeling that you respect yourself and deserve to be respected by other people.
- 27: Angry or unhappy.

Down:

- 1: A big deal.
- 4: Morally or socially correct or acceptable.
- 5: The difference between the lowest and highest values a variable can have.
- 7: A round vegetable that is usually white, yellow, or red and has a strong smell and taste.
- 9: Glasses or extravagant events.

- 11: Having a thin edge that is able to cut things or a fine point that is able to make a hole in things.
- 12: To make marks that represent letters, words, or numbers on a surface, such as paper.
- 13: A transparent, odourless, tasteless liquid.
- 18: A formal legal meeting in which evidence about crimes, disagreements, etc., is presented to a judge and often a jury so that decisions can be made according to the law.
- 20: Chosen, done, etc., without a particular plan or pattern.
- 21: A thin usually rubber bag that becomes larger when it is filled with air or gas.
- 22: A group of three or more musical notes that are played or sung at the same time.
- 23: The short, thick finger on the side of your hand.
- 24: To find someone or something that was lost.

DAN TEHAN

FEDERAL MEMBER FOR WANNON



My office can assist you with information about Federal Government services including:

- ✔ Centrelink
- ✔ National Disability Insurance Scheme (NDIS)
- ✔ Pensions and My Aged Care
- ✔ Medicare
- ✔ Australian Taxation Office (ATO)
- ✔ Veterans' Affairs
- ✔ Immigration, citizenship and passports
- ✔ Australia Post
- ✔ Telecommunications (broadband and mobile coverage)



Please fill out my 30 second survey

Dan Listens, Dan Cares, Dan Delivers!

Hamilton: 190 Gray Street, Hamilton VIC 3300
 Warrnambool: 158 Koroit Street, Warrnambool VIC 3280

☎ 1300 131 692 ✉ dan.tehan.mp@aph.gov.au
 🌐 dantehan.com.au 📘 DanTehanWannon 📷 dantehan

Authorised by Dan Tehan MP, Liberal, 190 Gray St, Hamilton VIC 3300.



Mandy's Hair Design

Hamilton

Bookings by appointment only



Phone 0417 511 177



KNOWLEDGE
 INNOVATION
 RELIABILITY
 COMMITMENT

The Best in Agronomic Advice

- Agronomy Services
- Farm Production & Planning Management
- Seed & Fertiliser Supply
- Crop & Pasture Protection Products
- Animal Health & Nutrition
- General Merchandise
- On Farm Deliveries

Western AG's core objective is to provide high quality production advice and to supply competitively priced inputs to assist clients to grow the business profitably.

Western AG Hamilton - T: 03 5579 5900
 Tim Wilson (Branch Manager) 0429 168 020
 Matt Barber (Senior Agronomist) 0488 298 170
 Megan Clothier (Animal Health) 0498 226 730
 Ben Gay (Merchandise & Logistics) 03 5579 5900
 Glenn Grey (Willaura) 0439 541 036
ADDRESS—236 COLERAINE ROAD HAMILTON

Coastal PEST MANAGEMENT

Pest Control Domestic or Commercial
 Servicing the South West:

- Cockroaches
- Spiders
- Rodents
- Termites
- Bedbugs / Fleas / Ants
- Bees
- Rodent proofing
- Termite inspections
- Termite treatments
- Pre-purchase inspections
- After lease treatments
- Wasps

TREVOR HIRST 0439 375 445
 trevor.hirst@outlook.com

Coastal PEST MANAGEMENT

TREVOR HIRST 0439 375 445
 trevor.hirst@outlook.com

Community Calendar & Contacts**Boram Boram Cemetery Trust**

- Contact Jeff Jellie 0407 781 407 or Sue 0418 141 301

Caramut & District Garden Club

- 2nd Tuesday monthly at 10 am.
See Garden Notes for venue or contact Gail 0419 510 364

Penshurst Hospital

- Combined Churches service 3rd Tuesday every month in W.J. Lewis wing at 11 am.
- Residents, Relatives & Carers group, bi-monthly, 1:30 pm.

Penshurst Social Support Group

- WDHS meets every Thursday; for Exercise, Activities, Outings and General chit chat. Join us for lots of fun & laughter, Sheppard Centre, - Penshurst Hospital. Please contact the Social Support Group Coordinator on 5551 8381 Or @ WDHS on 55518683

Mount Rouse & District Historical Society

- Meetings - 4th Sunday in January, March, May, July, September and November, 2pm at the Court House. New members are most welcome. Contact the Secretary 0418 141 301. The Court House open for Visitors 1st Saturday each month 9.30 am to 12.30 pm.

Friends Yatmerone Reserve

- 7.30 pm Community Room behind the VDC 2026 Meeting Dates: Bi-monthly 2nd Tuesday commencing: 10 March, 12 May, 14 July, 8 September, 10 November and 8 December.
- New members welcome.

Lions Club of Penshurst & District

- 1st Friday dinner meeting. 3rd Tuesday business meeting, each month at 8 pm. Venue TBA penshurst.vic@lions.org.au
- **Volcanoes Discovery Centre** Open every Friday 11 - 3pm, Weekends & School Holidays 10 - 4pm. New volunteers always welcome. Contact President Jo Vigliaturo 0408 544 670.

**AmbulanceVictoria**

The Penshurst Branch is staffed by local Ambulance Community Officers (ACOs).

Ambulance Victoria is looking for people to join the Penshurst team. If you are interested in becoming an ACO or would like further information, please follow the link below.

<https://www.ambulance.vic.gov.au/careers/become-a-first-responder/>

If you would like to chat to a local ACO, please email penshurst.teamleader@ambulance.vic.gov.au

Penshurst Bowls Club

- Pennant Season (October - February) meets 1st Thursday at 7.30pm
Alaister 0427 555 973
- Off Season 1st Tuesday at 7.30pm.

Penshurst Pony Club Rally

- 1st Sunday each month.
Contact Jenni 0409 962 969
- **Rouse Roundup Stockmans Challenge**
Sunday 22nd March -
Racecourse Reserve

PPA (Penshurst Progress Association)

4th Wednesday of every second month at 7pm (Jul, Sep, Nov, Jan, Mar, May) – Community meeting at the Memorial Hall
Committee meetings – as required

COMMUNITY MARKETS

Sunday 3 May, 11 October & 13 December

- **CWA**
4th Tuesday of the month at 7pm.
In the senior citizen Clubrooms.
No meeting in December
- **SENIOR CITIZENS CLUB**
Meets at the Club rooms in Bell Street.
Bingo last Tuesday each month. 1.45pm.
- **UKULELE GROUP**
Meets every Sunday at the Senior Citizens from 2pm until 3pm - Contact Paul 0402 902 013 for more Information
- **Penshurst Book Club** - meets 3rd Tuesday each month at 2pm. Contact Ruth Pihl on 0490418313

What's On Around Mt Rouse - APRIL 2026

Sunday	Monday	Tuesday	Wednesday	Thursday	Friday	Saturday
22 Lutheran Church Tabor 10am Uniting Church Service 11am Ukulele Group 2pm Historical Society 2pm Anglican Church Mass 5pm Catholic Church Mass 5pm	23 22nd March Rouse Roundup Stockmans Challenge Racecourse Reserve	24 Penshurst Shed 10am-4pm Country Womens Association (CWA) 7pm	25 <i>Newsletter Edition 15</i> (PPA) Penshurst Progress Association Meeting 7pm	26 WDHS Social Support Activity Group 10am Mobile Library 3-4pm	27 GOOD FRIDAY	28 Penshurst Shed 10am-4pm CourtHouse Open Day 9:30am-12:30pm
29 Lutheran Church Tabor 10am Ukulele Group 2pm	30 Racecourse Reserve	31 Penshurst Shed 10am-4pm BINGO @Senior Citz 1:45pm PFNC Merchandise Store open	01 WDHS Social Support Activity Group 10am	02 WDHS Social Support Activity Group 10am Mobile Library 3-4pm	03 GOOD FRIDAY	04 Penshurst Shed 10am-4pm CourtHouse Open Day 9:30am-12:30pm
05 EASTER SUNDAY END OF DAYLIGHT SAVINGS!! Lutheran Church Tabor 10am Ukulele Group 2pm	06 Racecourse Reserve	07 Penshurst Shed 10am-4pm Bowls Club Meeting 7:30pm	08 <i>Newsletter Edition 16</i> PFNC Merchandise Store closes	09 WDHS Social Support Activity Group 10am Mobile Library 3-4pm	10 Penshurst Shed 10am-4pm	11 Penshurst Shed 10am-4pm
12 Lutheran Church Tabor 10am Uniting Church Service 11am Ukulele Group 2pm Catholic Church Mass 5pm	13 Racecourse Reserve	14 Penshurst Shed 10am-4pm Caramut & District Garden Club 10am	15 Penshurst Shed 10am-4pm	16 WDHS Social Support Activity Group 10am Mobile Library 3-4pm	17 Monthly Pot luck Dinner 6:15pm	18 Penshurst Shed 10am-4pm BOMBERS HOME GAME
19 Catholic Lay Service 8:30am Lions DogWalk Day 10am Lutheran Church Tabor 10am Ukulele Group 2pm PFNC BOMBERS Sheep Drive	20 Racecourse Reserve	21 Penshurst Shed 10am-4pm Penshurst Hospital Combined Church Service 11am Penshurst Book Club 2pm Lions Club Meeting 7:30pm	22 <i>Newsletter Edition 17</i>	23 WDHS Social Support Activity Group 10am Mobile Library 3-4pm PFNC - AUSKICK 5pm	24 ANZAC DAY	25 ANZAC DAY DAWN SERVICE, Penshurst Penshurst Shed 10am-4pm
26 Lutheran Church Tabor 10am Uniting Church Service 11am Ukulele Group 2pm Anglican Church Mass 5pm Catholic Church Mass 5pm	27 Racecourse Reserve	28 Penshurst Shed 10am-4pm BINGO @Senior Citz 1:45pm Country Womens Association(CWA) 7pm	29 WDHS Social Support Activity Group 10am PFNC - AUSKICK 5pm	30 WDHS Social Support Activity Group 10am PFNC - AUSKICK 5pm	01 ANZAC DAY	02 Penshurst Shed 10am-4pm CourtHouse Open Day 9:30am-12:30pm

For the young and young at heart - Rainbow dragon to colour



Mt Rouse News & Views
Community Newsletter

Published by
Mt Rouse Community Newsletter Inc

ABN 95 801 619 635

Registered Address: 103 Cobb Street,
Penshurst 3289

Submissions: 46 Watton Street.

**DEADLINE FOR CURRENT SUBMISSIONS -
Saturday 4th April 2026**

The newsletter will be published on
Wednesday fortnightly and we would
appreciate submissions at the earliest
possible time within the fortnight but
no later than the Saturday immediately
prior to the Wednesday of publishing.

Editor : Ama Cooke

0402 870 738

All correspondence to:
mtrousenewsletter@gmail.com

Also available in colour online at
[https://mtrousenewsletter.org.au/
index.html](https://mtrousenewsletter.org.au/index.html)

Newsletter Advertising Rates

Per Issue from Jan 2025

Full page B&W \$22

Full page colour \$52

1/2 page \$15

1/3 page \$9.50 (base only)

1/4 page \$7.50

Business Card \$5

Our newsletter is free due to the
continuing support of our
advertisers. Thank you.

Penshurst Church Services

Bethlehem Lutheran Church Tabor

Service every Sunday 10.00am

Penshurst Anglican Church

5pm Mass 4th Sunday each month

For further details contact
Fr. David Oulton 0435867040

St Andrew's Uniting Church Penshurst

2nd & 4th Sunday

11am Service

St Joseph's Catholic Church Penshurst

1st Sunday No Service

2nd Sunday Mass 5pm

3rd Sunday Lay Service 8.30am

4th Sunday Mass 5pm

5th Sunday No Service

"Dare to courageous in life.
You have nothing to lose."

— Lailah Gifty Akita



Mobile Library

Will be visiting Penshurst
every Thursday fortnight

3.00 - 4.00pm

Outside the Hall in Martin St

9 & 23 April

Phone: 5573 0470

www.sthgrampians.vic.gov.au/library

**LIKE US ON FACEBOOK
GREATER HAMILTON LIBRARY**